

Spool Valve Motors

BMP Series

Features

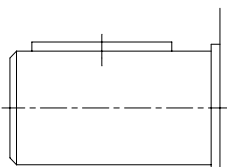
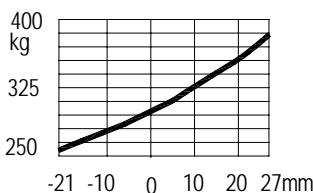
- ⊙ Compact in design with spool valving and Geroler
- ⊙ Imported high pressure capacity shaft seal
- ⊙ Wide variety of mounting flanges, shafts, ports and speed provides design flexibility
- ⊙ Direction of shaft rotation and speed can be controlled easily and smoothly
- ⊙ Best combination of efficiency and economy in medium duty applications



Specification Data

Displacement cc/r		50	63	80	100	125	160	200	250	320	400	500
Flow	Rated	38	45	57	57	57	57	57	57	57	57	57
	LPM	Max	45	53	68	68	68	68	68	68	68	68
Speed	Rated	698	663	679	558	452	354	284	235	178	145	115
	RPM	Max	859	774	811	669	544	425	339	281	208	171
Pressure Bar	Rated	124	124	124	124	124	115	110	100	90	90	83
	Max	138	138	138	138	138	124	124	124	124	110	90
Torque Nm	Rated	73	86	124	154	194	228	285	304	364	466	496
	Max	84	93	139	173	216	261	319	378	403	522	516
Weight Kg		5	5.3	5.5	6.1	6.2	6.4	6.7	7.1	7.4	7.7	8

• Shaft Side Load Capacity



⊙ Max. pressure is the allowed pressure at the inlet port. Rated pressure is the working pressure difference between inlet and outlet port.

⊙ A simultaneous maximum RPM and maximum pressure NOT recommended
Maximum pressure or maximum RPM operation: 10% of every minute

⊙ Recommended fluids: Anti-wear type of hydraulic oil. Viscosity recommended 37-73 cSt. Recommended filtration ISO18/13.

⊙ Maximum operating temperature recommended 80°C

⊙ Special high pressure capacity shaft seal ensures back pressure up to 10 Mpa. Recommended preferable back pressure 5 Mpa. Case drain line is recommended when back pressure higher than 5 Mpa. When case drain line is used, make sure the motor is always filled with oil. The motor life is benefited from a case drain line.

⊙ It is highly recommended that the motor runs at 30% of rated pressure for at least one hour before application of full load. Be sure the motor is filled with fluid prior to any load applications.

